

# CREATE XEROX RESOURCES FROM PDF FILES



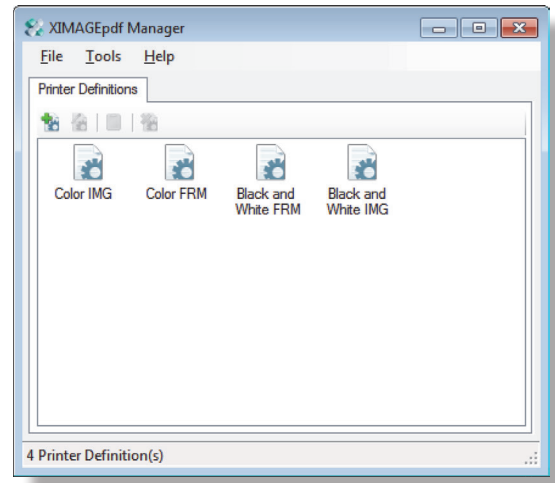
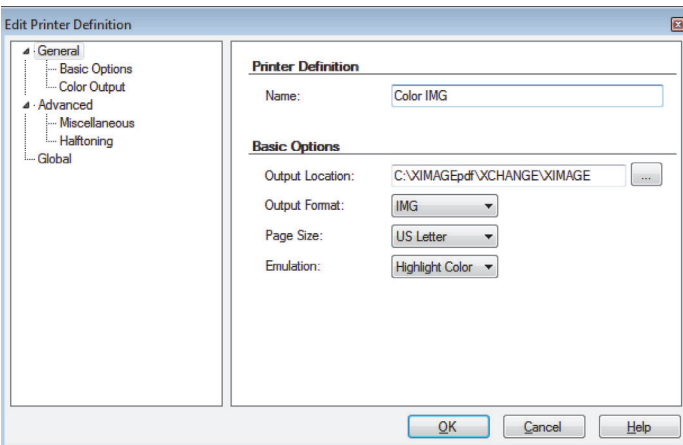
CHEMISTRY™ CUSTOMER COMMUNICATIONS  
MANAGEMENT PLATFORM.  
**POWERED BY SOLIMAR™**

## XIMAGEpdf™ RESOURCE CREATION TOOL

XIMAGEpdf™ is a resource creation tool that converts single page PDF files into Xerox Metacode form (FRM) overlays and images (IMG) resources. Outputting standard Xerox resources, FRMs created by XIMAGEpdf can be uploaded directly onto a Metacode printer or to the Solimar® Print Director Enterprise™ (SPDE) print server that fully emulates all LPS printer makes and models. The new resources can be used for creating Xerox applications for printing onto any IPDS, PCL, and PostScript printers as well as PDF files for viewing, archiving or epresentation.

## PRINTER DEFINITIONS

XIMAGEpdf allows you to develop specific printer definitions that represent the printers or other devices that will use the output images (IMG) or forms (FRM). Printer definitions are used to control output locations, colour and halftone options, memory usage, and other Xerox and printer specific settings.



## FONT LOADER UTILITY

To provide efficient management of the fonts used in the PDF input file, XIMAGEpdf includes the Font Loader utility, which can make fonts available to the conversion without embedding them in the data. Font Loader can also map substitutes for missing fonts. Adding fonts and substituting fonts require the Font Loader. TrueType fonts, Type 1 fonts (.pfa and .pfb files), as well as Type 3 fonts (.pfa files) can be added to the emulation or used as substitute fonts.

## SOLIMAR FSL COMPILER

To support legacy Xerox Forms Source Libraries (FSLs), XIMAGEpdf includes the Solimar Compiler, which formats the resource for use on the Xerox printer or with the Solimar® Print Director™ Enterprise (SPDE) XCHANGE modules. Multiple FSL files can be compiled simultaneously. Simply point the FSL compiler to your resources, open the FSL, make any changes and then compile.

## XIMAGEpdf KEY FEATURES

- Xerox output: Form (FRM) and Image (IMG)
- Colour biasing
- Darken output
- Dithering quality control
- File naming
- Graphic dithering patterns
- Image Offset control
- Image size: 2" x 2" up to 17" x 17"
- Spot colour and Xerox v5 ink palette support
- Memory allocation and management
- Font Loader Utility
- Solimar FSL Compiler

**NOTE: XEROX LPS PRINTERS MUST HAVE A GRAPHICS HANDLING OPTION (GHO OR GVG) IN ORDER TO PRINT XIMAGEPDF OUTPUT.**

### About Solimar Systems, Inc.

Solimar Systems is a leading developer of Customer Communication Management and Delivery solutions. Our solutions provide clients visibility into their workflows and operations while driving costs down; track the lifecycle of jobs from receipt to multi-channel distribution; optimise and convert data and documents; manage and optimise production printing across facilities and enable secure access and compliance. We also drive value and revenue generating opportunities by adding dynamic, conditional messaging to documents via digital inserts, onserts and augmented reality (AR) experiences. With thousands of clients worldwide, including 70% of the Fortune 100, Solimar has integral, proven IT solutions that have benefited print and data centres for more than 25 years.

**Jamie Walsh**  
Regional Sales Manager

+44 (0)7377 143 665 @ jamie.walsh@solimarsystems.com  
Robin Hill, Southam Lane • Cheltenham GL52 3NY • United Kingdom



Solimar Systems, Inc. • tel: +1.619.849.2800 • sales@solimarsystems.com • www.solimarsystems.com  
© 2017. Solimar Systems, Inc. All rights reserved. Trademarks are property of their respective owners. REV 1017-v1.2