

# ENTERPRISE OUTPUT MANAGEMENT SOLUTION OPTIMISES PRODUCTION ENVIRONMENTS



CHEMISTRY™ CUSTOMER COMMUNICATIONS  
MANAGEMENT PLATFORM.  
**POWERED BY SOLIMAR™**

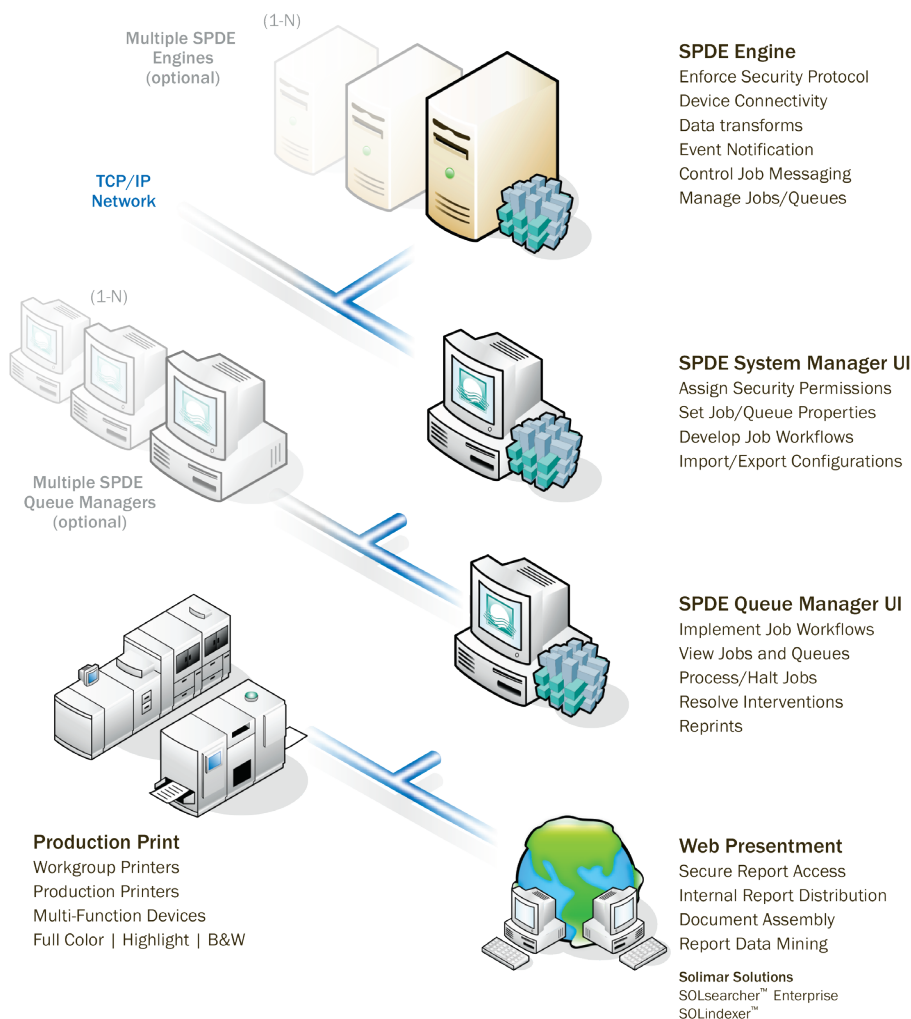
## SOLUTION OVERVIEW

The Solimar® Print Director® Enterprise (SPDE) is a set of programs designed to turn your computer into a powerful enterprise output management system. SPDE connects host computers to production printers that, under normal circumstances, cannot interface with each other. For example, SPDE can be used to connect midrange or mainframe hosts and networks to one or more printers and archive systems.

SPDE allows you to print from multiple host computers to multiple printing devices simultaneously. It can also perform multiple conversion routines on each print file.

By supporting combinations of inputs, outputs, and conversions, SPDE gives you a powerful print manager that transparently connects your host systems with the production printers your company needs. As your requirements grow, you can add software modules, install additional inputs and outputs, or upgrade to take advantage of new features and capabilities. The power of SPDE lies in its ability to interface with virtually any host or printer. Moreover, its processing control, conversion routines, and job management capabilities allow a very high degree of control over your printing environment.

## SPDE WORKFLOW DIAGRAM



## PRODUCT FEATURES

- Client-server architecture
- Enhanced Windows® UI to view and control all job queues
- Administrator and operator interfaces
- Integrated connectivity
- Powerful print data transforms
- Event notification
- Integrated multi-level security
- Multiple CPU support
- Remote viewing/control for multiple users simultaneously
- SPDE "Engine" runs as a service

## PRODUCT BENEFITS

- Remote administration and management
- Centralised processing
  - Less training
  - More adaptable to change
  - Easier operations
- Increase productivity
- Extend life of current printer investments
- Enable new devices with existing applications
- Part of overall workflow strategy
  - Postal cleanse/sort
  - Data enhancement
  - Archive
- Centralised resource management
- Seamless reprint capabilities
- Customisable queue views for operators

## QUEUE MANAGEMENT FEATURES

- Auto/manual routing
- Auto job retain/delete
- Banner/trailer pages
- Bookmaking
- Data modification
- Drag-and-drop GUI
- Exception controls
- File naming
- Job parsing
- Job tracking
- Load balancing
- Log system activity
- Page range/job reprints
- Pre-pend/append data
- Queue/job security control
- Redirect cancelled jobs
- Single view of all system queues
- Timed release
- Track operator activity



## UPGRADE TO SOLIMAR PRINT DIRECTOR ENTERPRISE (SPDE)

Solimar Systems has a proven track record of helping clients obtain long-term value by extending the useful life of its solutions through product upgrades. Solimar's solutions are specifically designed to anticipate constantly evolving business requirements, including:

- Improvements to existing business processes
- Functionality enhancements
- Opportunities to leverage new technology
- Changing regulatory requirements

## SPECIAL UPGRADE PRICING FOR CURRENT USERS

To our valued, worldwide Solimar Print/Director clients, we offer you special discounted upgrade pricing. For details and eligibility, please contact your Solimar Account Manager, authorised Solimar distributor or the Solimar Technical Sales team at 1+619.849.2800 or [sales@solimarsystems.com](mailto:sales@solimarsystems.com).

SOLIMAR



**SOLIMAR HAS OVER  
45,000 PRODUCTS  
INSTALLED IN  
THOUSANDS OF SITES  
WORLDWIDE.**

**FACTOID**

## ENTERPRISE OUTPUT MANAGEMENT SOLUTION

The Solimar Print Director Enterprise (SPDE) is a client-server-based enterprise print management solution designed to improve the performance of production output processes and optimise management control.

Utilising advanced technology, Solimar Print Director Enterprise combines multi-level security, remote administrator and operator access, event logging and notification, direct device connectivity capabilities, powerful job routing and tracking with industry-leading data stream transformations.

## “NEVER LEAVE A CLIENT BEHIND” PHILOSOPHY

The Solimar Print Director product line has been a market-leading output management solution since it was first introduced in 1991. Since that time, Solimar has consistently invested in and improved the Print Director product, maintaining the philosophy: Never Leave A Client Behind. To that end, we preserve your existing investments in software, hardware, and application development. What's more, we make it as easy as possible to upgrade to the latest software version and reap the benefits of the latest technology.

Which functionality does your organisation require?

- Client-server architecture
- Remote administration and management
- Event notification
- System message controls and filtering
- Advanced system security with operator log-in assigned rights and privileges
- Support for industry standard current operating system
- Optimised user interface
- Maximum processing performance

If any of the checked items can improve your environment, it is recommended that you upgrade to Solimar Print Director Enterprise. Upgrade to SPDE today to experience the exciting new technology that can empower you to greatly improve productivity and dramatically reduce the time and cost of output operations.



## SOLUTION FEATURES & BENEFITS

### ENHANCED PERFORMANCE

- Client-server architecture
- SPDE "Engine" runs as a service - separate administrator and operator interfaces remotely connect to engine
- Increased processing performance of data stream transforms
- Up to 4 concurrent PS/PDF::XX transforms
- XML-based configuration file settings load and save faster
- Further increase performance by leveraging the latest hardware advancements - hyper-threading and dual-core CPUs

### ADDED CONTROL AND MANAGEMENT FOR ADMINISTRATORS

- Remote access
- Multi-level security - secure login, operator assigned rights/privileges
- Separate interfaces for system administration and operator job control
- Track and control operator activity based on logical queues
- Set Start Point and compilers can run as standalone applications

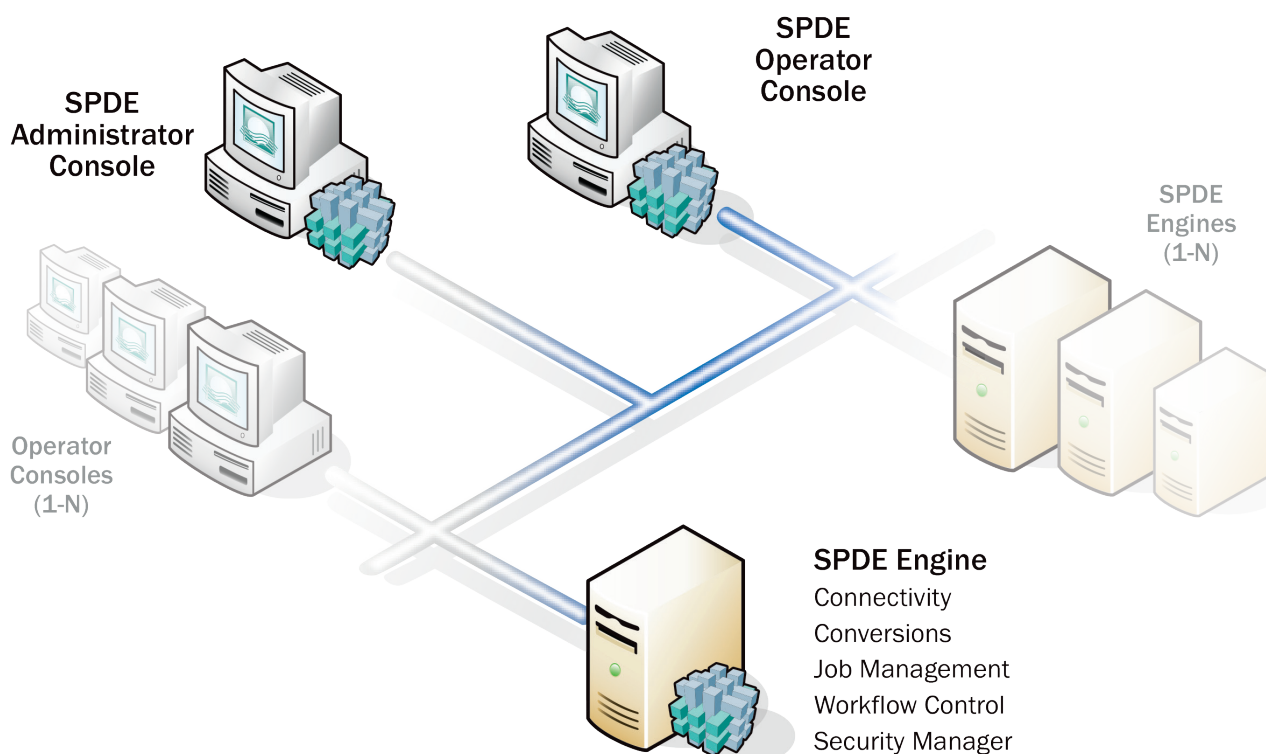
### INCREASED PRODUCTIVITY WITH EVENT NOTIFICATION AND MESSAGING

- Customised event driven alerts - speaker beeps, text to speech, .wav files, e-mail
- Enhanced system messaging - custom message tabs, message filters, global message view, queue messaging

### IMPROVED OPERATOR EFFICIENCY

- Enhanced Windows® user interface
- New Queue Manager console facilitates process automation
- Monitor and control all jobs and queues from a single or multiple windows
- Logical queues can be grouped together for easy monitoring
- Queue views can be customised for each operator
- Multiple users can manage job workflow concurrently
- Enhanced methods to manage operator prompts/interventions - reprints, start commands
- Simplifies managing manual and/or automated processes
- Additional job status information - moving, adding, deleting, copying
- Easier and improved control reduces operator errors

## SPDE CLIENT SERVER ARCHITECTURE





## SPDE SYSTEM MANAGER

The System Manager provides system administrators control over the processing Engine to define processing rules and workflow. The System Manager also provides access and control over print queues and jobs allowing you to initiate and halt job processing, move jobs between queues, control reprints, set event notifications among many other features.

In the System Manager, you can perform the following tasks:

- Create and manage SPDE configurations
- Define processing and workflow logic
- Set up audio and e-mail alerts
- Manage interventions, which require operator-supplied information
- Configure user and group security rights and permissions
- Activate log files that track SPDE system and accounting messages
- Manage the SPDE Host Server



**SPDE IS THE 5TH GENERATION OF THE PRINT DIRECTOR PRODUCT LINE AND HAS GROWN TO 19 CONNECTIVITY OPTIONS AND 40 CONVERSIONS AND DATA ENHANCEMENT MODULES.**

**SOLIMAR**

**FACTOID**

### SPDE SYSTEM MANAGER UI

The SPDE System Manager provides administrators with an intuitive GUI to define and monitor system security and workflow processing.

**System Manager [localhost] - Enterprise Print Distribution**

File Queue Manage Tools Window Help

**T1 Print Distribution (Active)**

**Ready to Print (17)**

Job	Queue	Size	Status	Copies	Pages	Class	Creation Date
Accounting - 02937...	Ready to Print	694 KB	Hold	1	9	ACCT	2006-08-03 10:34:45.165
Annuity Statement...	Ready to Print	5369 KB	Hold	1	15	FINANCE	2006-08-04 14:41:10.086
Checks - Secure - ...	Ready to Print	1065 KB	Hold	1	100	MICR	2006-08-04 14:45:27.892
Cole097975107510...	Ready to Print	2128 KB	Hold	1	30	A	2006-08-04 14:41:16.289
Daily Sales Report ...	Ready to Print	559 KB	Hold	1	7	REPT	2006-07-13 16:20:19.082
Financial Statement...	Ready to Print	2108 KB	Hold	1	36	ACCT	2006-08-02 13:09:05.776
Greenbar report.lm0...	Ready to Print	79 KB	Hold	1	5	REPT	2006-08-04 14:41:32.523
Infiniti Insurance De...	Ready to Print	7315 KB	Hold	1	200	INSUR	2006-08-03 10:36:39.256
Insurance Applicati...	Ready to Print	11386 KB	Hold	1	76	INSUR	2006-07-13 16:26:39.040
Invoice.nm0050050...	Ready to Print	2466 KB	Hold	1	2	INV	2006-07-13 17:04:39.957
Origins Life Renew...	Ready to Print	20295 KB	Hold	1	400	INSUR	2006-08-04 14:44:00.753
Payroll Report.lm-00...	Ready to Print	955 KB	Hold	1	20	ACCT	2006-08-04 14:41:08.148
Production-214109...	Ready to Print	2128 KB	Hold	1	30	PRODD	2006-07-31 11:23:46.985
Report-2:5972-674...	Ready to Print	655 KB	Hold	1	9	A	2006-08-04 14:41:08.336
Sysout Analysis Re...	Ready to Print	296 KB	Hold	1	14	COLOR	2006-08-04 14:41:08.414
Tate001237834652...	Ready to Print	2128 KB	Hold	1	30	A	2006-08-04 14:41:08.555
Welcome Letter - 0...	Ready to Print	682 KB	Hold	10000	7	STOCK	2006-07-13 16:26:12.807

100% Origins Life Renewal010010000050000009000000003-0010200.PS

Timestamp	Message	Queue	Job ID	Path	Module
2006-08-04 14:42:38	Spool file 'Origins Life Renewal010010000050000009000000...	Ready to Print	871247f9-f036-4fc3-9e03-...	Jobs Ready to Print	Disk Spooler
2006-08-04 14:44:00	Processing: Origins Life Renewal010010000050000009000000...	Printer 12 - DP96 - San Diego	c32731d7-6804-40ae-81c...	Printer 12 - DP96 - Remote	Queue Reader
2006-08-04 14:44:42	400 impressions created for job 'Origins Life Renewal01001...	Printer 12 - DP96 - San Diego	c32731d7-6804-40ae-81c...	Printer 12 - DP96 - Remote	PostScript:PostScript
2006-08-04 14:44:42	Spool file 'Origins Life Renewal010010000050000009000000...	Printer 12 - DP96 - San Diego	c32731d7-6804-40ae-81c...	Printer 12 - DP96 - Remote	Disk Spooler
2006-08-04 14:45:27	Processing: Checks - Secure - -1097501985121.PS	Printer 1 - DP180	3c3a5ef6-0c7d-472d-b8c...	Printer 1 - DP180	Queue Reader
2006-08-04 14:45:30	100 impressions created for job 'Checks - Secure - -109750...	Printer 1 - DP180	3c3a5ef6-0c7d-472d-b8c...	Printer 1 - DP180	PostScript:PostScript
2006-08-04 14:45:30	Spool file 'Checks - Secure - -1097501985121000.PS' creat...	Printer 1 - DP180	3c3a5ef6-0c7d-472d-b8c...	Printer 1 - DP180	Disk Spooler

General Errors

Targets: 1 Active: 1 Paused: 0 Halted: 0

## AUTOMATED PRODUCTION PRINT & WEB PRESENTMENT WORKFLOW SOLUTIONS



### **SOLITRACK™**

SOLitrack is a database-centric job management system that uses a centralised web-based interface to control multiple instances of Print Director™ Enterprise to track and monitor job security, routing and destination device status.



### **SOLIMAR® PRINT DIRECTOR® ENTERPRISE**

Client-server-based output management solution that provides multi-level security, remote administrator and operator access, email alerts, powerful job routing/tracking capabilities, and industry-leading data stream transforms.



### **SOLFUSION™**

Automates multiple sets of output production tasks to support business-critical processes. SOLfusion supported tasks include external processes, scripts, indexing of PDF documents and execution of Rubika process configurations.



### **RUBIKA®**

Modular document re-engineering workflow solution that can be configured to automate manual processes, enable postal savings, add value to documents - including AR experiences, and modify print data on-the-fly at run time.



### **ICONVERT™**

AFP transform engine that automatically routes mainframe, AS/400, and application reports directly to virtually all desktop and production printers, viewing stations and archive systems.



### **SOLSCRIPT™**

PostScript preamble that emulates and optimises Xerox VIPP® software, extending the reach of VIPP applications to virtually any workgroup and production printers, as well as ERM/COLD and archive systems.



### **SOLIMAR INDEXING TOOLS**

Powerful PDF indexing tools for Adobe® Acrobat® and Reader® that provides an easy to use method for capturing relevant information. Works as stand-alone product or in conjunction with other Solimar workflow solutions.



### **SOLSEARCHER™ ENTERPRISE**

Secure electronic document delivery and web presentment solution that enables organisations to effectively index, store, search and retrieve large collections of transactional and scanned documents.

## INCOMING DATA & APPLICATIONS



### Data Sources

Direct Channel, FTP, sFTP,  
Shopping Cart, Storefront



### Print Languages

AFP/IPDS, LCDS, Metacode,  
PCL, PDF, PostScript, VIPP®



### Applications

Catalogs, Books, Labels,  
POD, Transactional



### 3rd Party Tools

Preflight, Transforms,  
Composition, Workflow

## JOB TRACKING, SCHEDULING & REPORTING



SOLITRACK™

- Operator & Mobile UI
- Mobile Job Tracking
- SLA Scheduling & Monitoring
- Alerts & Notifications
- Load Balancing & Failover
- Configurable Workflows & Checkpoints

- Secure Login & Permissions
- Page Counting
- Customisable Reporting
- Live Printer Status
- File Type Detection
- Integration with Solimar Suite of Solutions

## ENTERPRISE OUTPUT MANAGEMENT

- Job Ticket Support
- Integrated Connectivity
- Powerful Print Data Transforms
  - IN: AFPDS/IPDS, DJDE, LCDS/Metacode, Line Data, PCL, PDF, PostScript, Raw Data, TIFF, VIPP®
  - OUT: AFPDS/IPDS, HTML5, Line Data, Metacode, PCL, PDF, PostScript, TIFF, XML
- Data Stream Optimisation
- Robust Queue Management
- Job Tracking/Accounting
- B/W to Colour Migration
- JDF/ADF Fulfillment



SOLIMAR®  
PRINT DIRECTOR®  
ENTERPRISE

PDF

PDF

## DOCUMENT RE-ENGINEERING

- Address Sort/Cleanse
- Annotations
- Archive Workflow
- Assemble/2-Up/N to 1
- Barcodes, OMR, Text
- Commingle
- Concatenate/Merge
- Conditional Messaging
- Data Import/Export
- Delete/Replace Pages
- DPM Finishing
- Encryption
- Finishing Commands
- Imposition/Book Block
- Insert Pages/Graphics
- Overlay/Underlay/Mask
- Rename
- Scale/Shift/Rotate
- Sort
- Split/Segment



RUBIKA®

## PROCESS AUTOMATION & INDEXING



SOLFUSION™



SOLIMAR  
INDEXING TOOLS



EXTERNAL  
PROCESSES

## PRODUCTION PRINT & WEB PRESENTMENT WORKFLOWS



High-Speed Inkjet  
Continuous Feed  
Highlight & Full Colour  
Finishing Systems  
Integrity Systems



SOLSEARCHER®  
ENTERPRISE

Report Distribution  
Data Mining  
Document Assembly  
Automated Reprints  
Web Services API,  
B2B, B2C Integration



PDF, HTML5



# SPDE QUEUE MANAGER

The Queue Manager provides a streamlined UI for print operators. The consolidated view allows print operators to monitor and control print queues and jobs. This allows operators to initiate and halt job processing, reorder and move jobs between queues, handle reprints, interventions, preview PDF files, and more based on the security rights assigned to them.

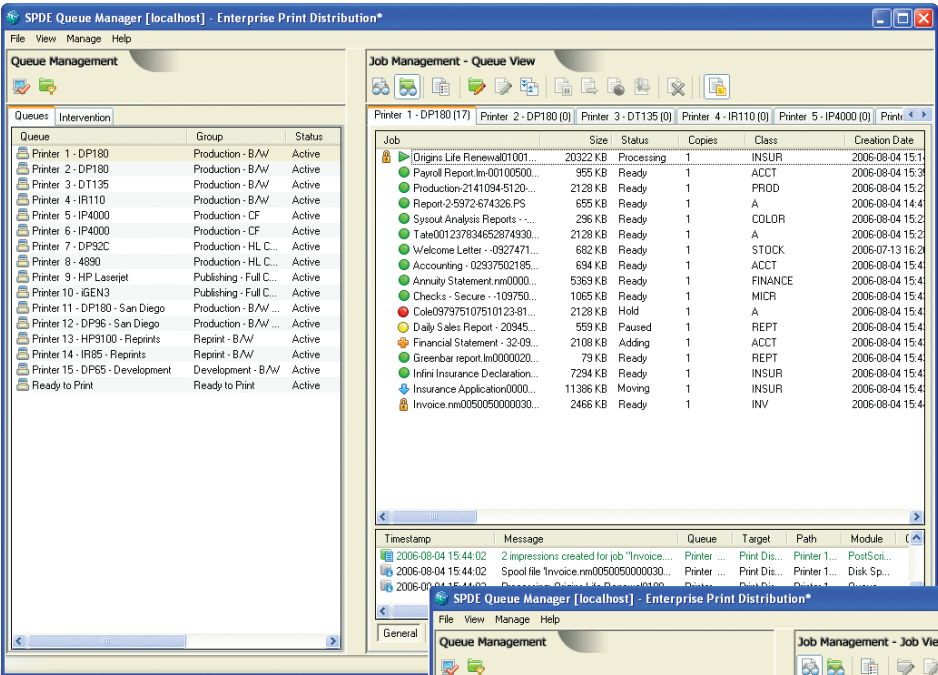
The Queue Manager's highly customisable UI allows the operators to create "views" that organise the queues and jobs according to the operator's preferences, and filter messages based on user-defined rules. A queue window can be opened for each logical queue and multiple queues can be grouped together for management within one window.



**A SINGLE CLIENT SAVES  
OVER \$6 MILLION DOLLARS  
ANNUALLY IN LABOR  
COSTS WITH A SOLIMAR  
SOLUTION.**

**SOLIMAR**

**FACTOID**

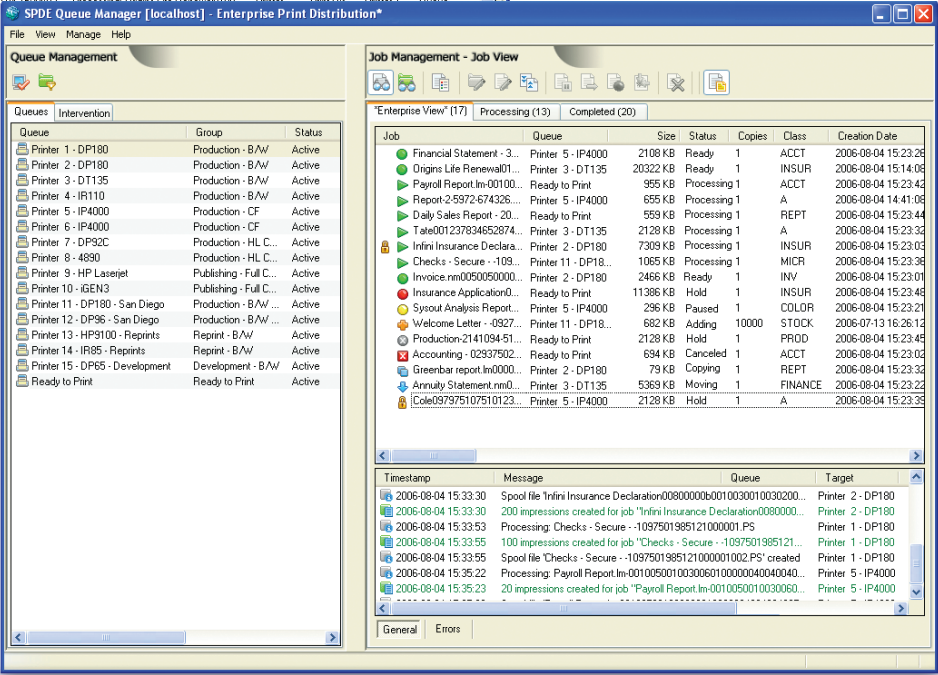


## QUEUE MANAGEMENT UI

Panel displaying available queues and intervention controls. Interactive queue status displays the different queue states.

## JOB/QUEUE VIEW UI

Displays individual jobs or queues and the status for each job/queue. Robust messaging and message filters display all important information regarding each job/queue.

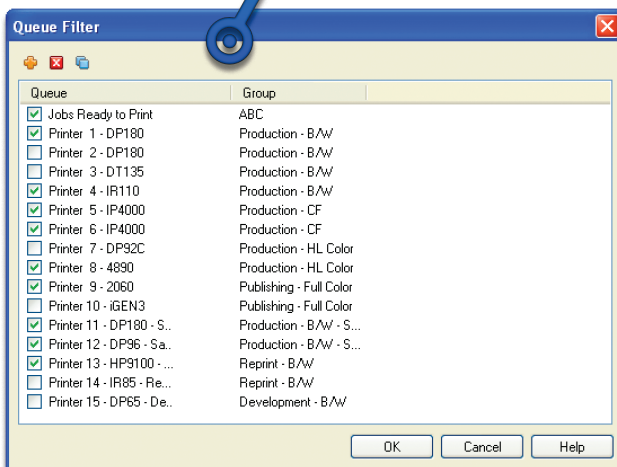
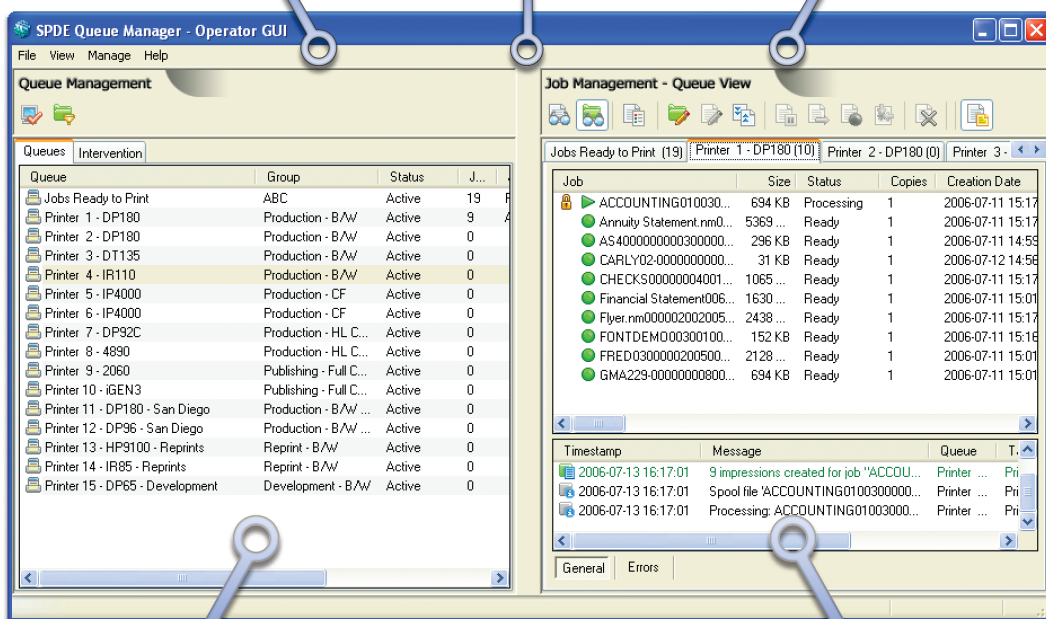
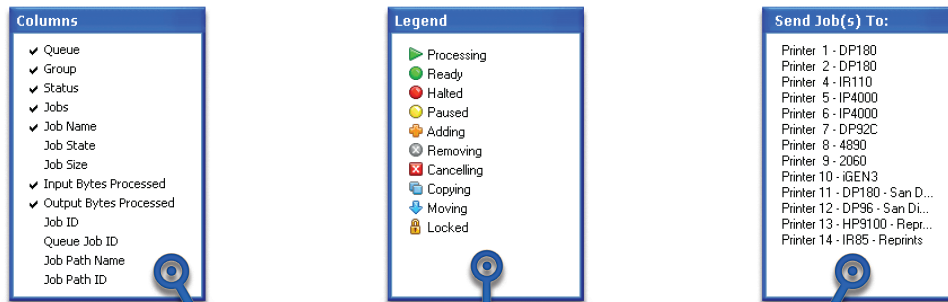


## CUSTOM VIEWS

Select specific options to customise queue views. Display different columns based on job attributes.

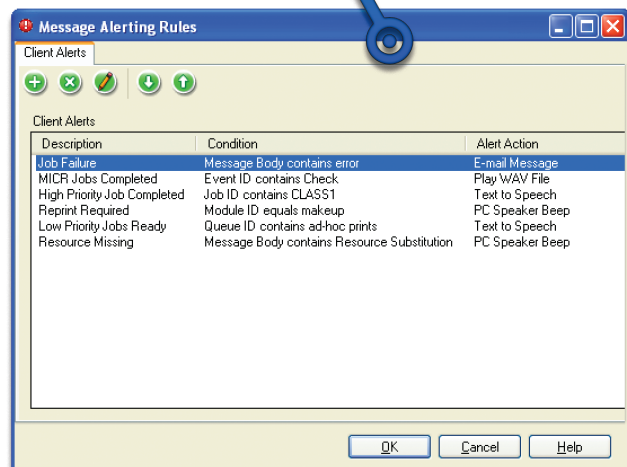
## ROUTING JOBS

Send jobs to different queues via drag and drop or select from a list of available queues.



## QUEUE FILTERING

Display only the queues you find important through intelligent queue filters.



## MESSAGING/ALERTS

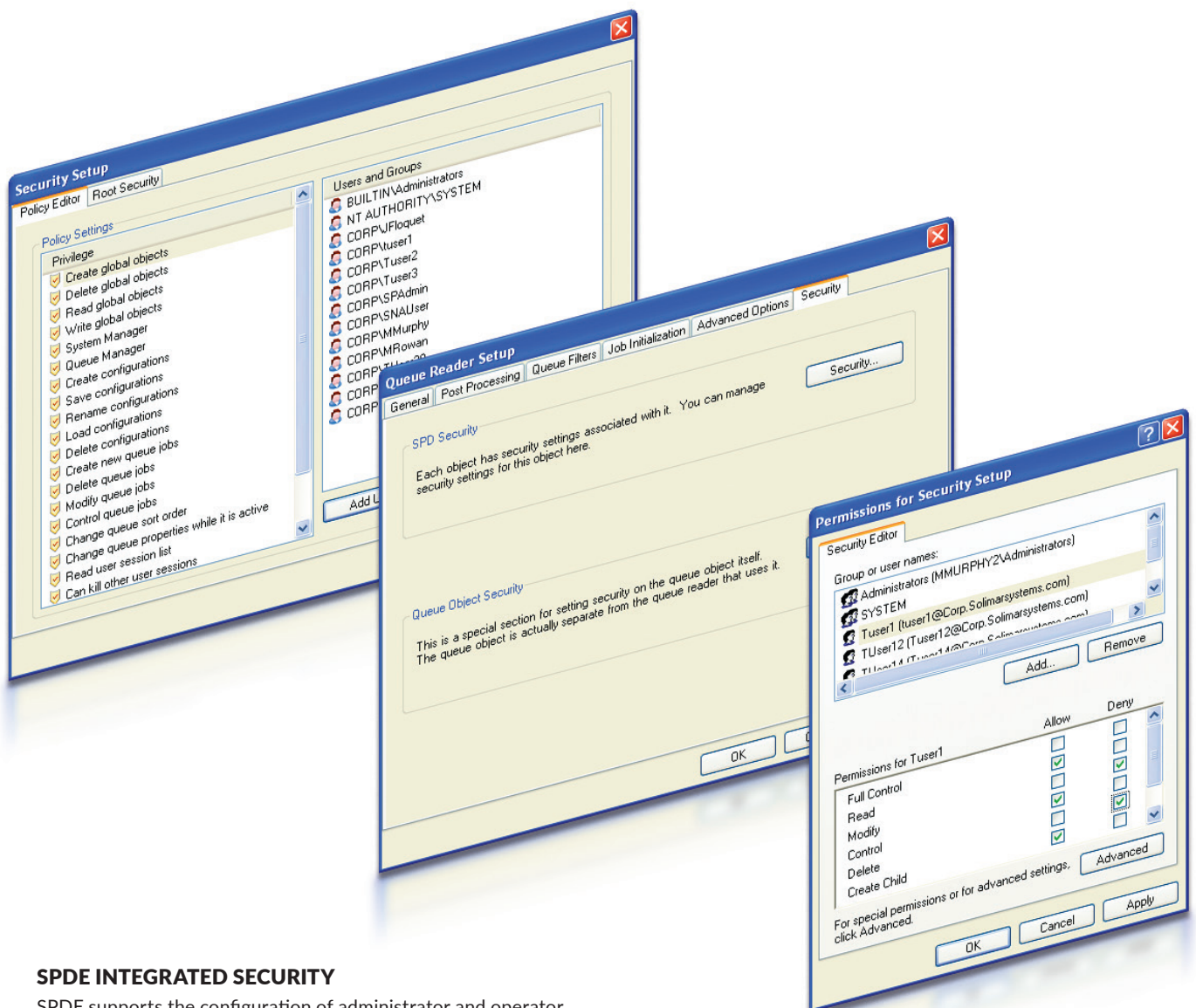
Set specific criteria for automated messaging and alerts; including playing audio files, text to speech and e-mail.

## INTEGRATED MULTI-LEVEL SECURITY

The security system in SPDE's System Manager allows administrators to set rules that limit access and actions for the objects in a configuration and to determine what interfaces are available to each user. Most commonly, administrators will define and manage workflow rules with the System Manager and operators will only have access to the Queue Manager for controlling and monitoring job workflow.

Granular security enables administrators to control who can do what in the system for every module in a configuration based on their login credentials. For instance, an administrator could prevent a group from accessing a job queue, prohibit a user from making configuration changes, and allow others to fully control some queues, but only monitor processing activity for others, and deny access to others.

Using queue security enables administrators to set up a workflow to track operator activity. If an action performed by a user is denied because of insufficient policies or permissions, the event will be logged in the Windows Event Viewer.



### SPDE INTEGRATED SECURITY

SPDE supports the configuration of administrator and operator policies, privileges and access rights. Security controls may be set at a system-wide level or individual module levels to determine what settings and interfaces are available to each user.





## ENTERPRISE PRINT & DOCUMENT DELIVERY SOLUTIONS

With more than 45,000 products installed in thousands of sites worldwide, Solimar Systems is a leading provider of document delivery solutions for transactional/POD production printing environments and online web presentment.



Database-centric job management system with a web-based interface to drive printers and control Solimar systems to track and monitor job security, routing and device statuses.



Client-server-based output management solution combining integrated connectivity with fast, accurate print stream conversions, and powerful job routing/tracking capabilities.



Modular document re-engineering and post-composition solution that can be configured to automate manual processes, enable postal savings, add value to documents, and dynamically modify print data.



Automates output production tasks to support business-critical processes such as external processes & scripts, indexing PDF documents, and executing Rubika® configurations.



Powerful PDF indexing tools that provide methods to quickly design, test and manage indexing templates for data extraction. Works as stand-alone product or with SOLsearcher™ and Rubika®.



Scalable and secure electronic document delivery solution that enables organisations to index, store, search and retrieve large collections of transactional and scanned documents.

### ABOUT SOLIMAR SYSTEMS, INC.

Solimar Systems is a leading developer of Customer Communication Management and Delivery solutions. Our solutions provide clients visibility into their workflows and operations while driving costs down; track the lifecycle of jobs from receipt to multi-channel distribution; optimise and convert data and documents; manage and optimise production printing across facilities and enable secure access and compliance. We also drive value and revenue generating opportunities by adding dynamic, conditional messaging to documents via digital inserts, onserts and augmented reality (AR) experiences. With thousands of clients worldwide, including 70% of the Fortune 100, Solimar has integral, proven IT solutions that have benefited print and data centres for more than 25 years.

**Jamie Walsh**  
Regional Sales Manager

+44 (0)7377 143 665 @ [jamie.walsh@solimarsystems.com](mailto:jamie.walsh@solimarsystems.com)  
Robin Hill, Southam Lane • Cheltenham GL52 3NY • United Kingdom



Solimar Systems, Inc. • tel: +1.619.849.2800 • [sales@solimarsystems.com](mailto:sales@solimarsystems.com) • [www.solimarsystems.com](http://www.solimarsystems.com)  
© 2019. Solimar Systems, Inc. All rights reserved. Trademarks are property of their respective owners. REV 1019-v1.3