



SUN & SEA • 1991
SOLIMAR
SYSTEMS



READYPDF®

READYPDF®

INDUSTRIAL PDF OPTIMIZATION

✿ PRODUCTION PRINT ✿ ARCHIVE ✿ SECURE PROOFS ✿



Watch how ReadyPDF
automates and optimizes
PDF workflows!



CHEMISTRY™
POWERED BY SOLIMAR

AUTOMATE & OPTIMIZE Industrial PDF Workflows

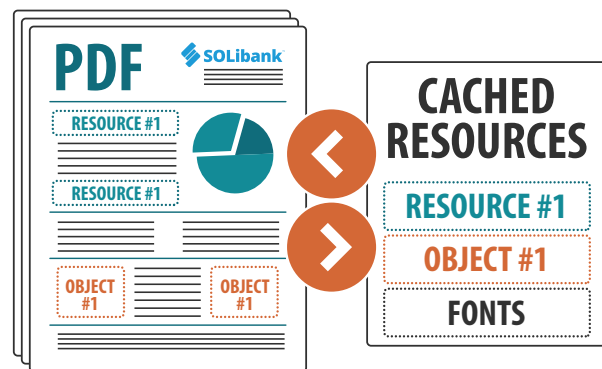
ReadyPDF is a powerful solution for streamlining and enhancing PDF workflows. Designed to optimize and standardize high-volume industrial PDF files, ReadyPDF helps organizations improve output quality, reduce file sizes, and ensure consistent results across devices and production environments. ReadyPDF simplifies prepress preparation, automates repetitive tasks, and eliminates common PDF issues—making it ideal for onboarding new jobs, accelerating processing, and delivering reliable, print-ready files.



Combine & Reuse Resources

By consolidating duplicate resources, ReadyPDF reduces file size and accelerates RIP times—delivering leaner, more efficient PDFs.

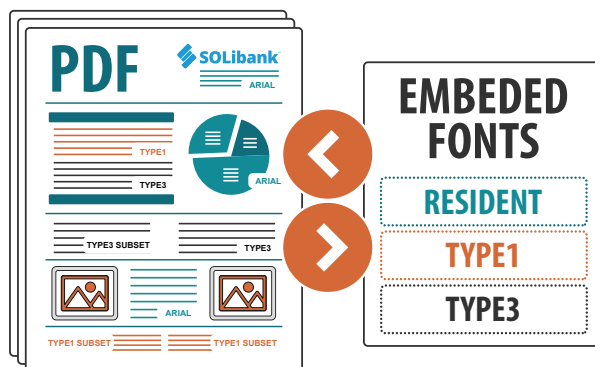
- Reduce file complexity
- Smaller file sizes
- Consolidation: fonts, graphics, XObjects
- Reduce processing times
- Improve file transfer speeds



Embed & Consolidate Fonts

ReadyPDF streamlines font usage by consolidating, embedding, or removing unnecessary fonts—including the powerful ability to merge subsets and track usage.

- Reduce/merge & add missing fonts
- Font consolidation: subset fonts, Type1, Type3
- Replace subsets with full font families
- Some DFEs cannot process subsets or certain types of fonts—by optimizing fonts, jobs print faster and can be redirected to other devices



*Solimar has provided, not just software, but **a platform and support model that empowers us** to meet the highest standards for reliability, compliance, and responsiveness.*

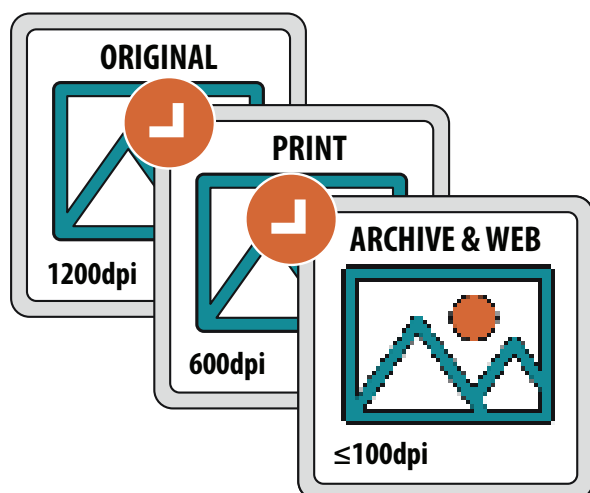
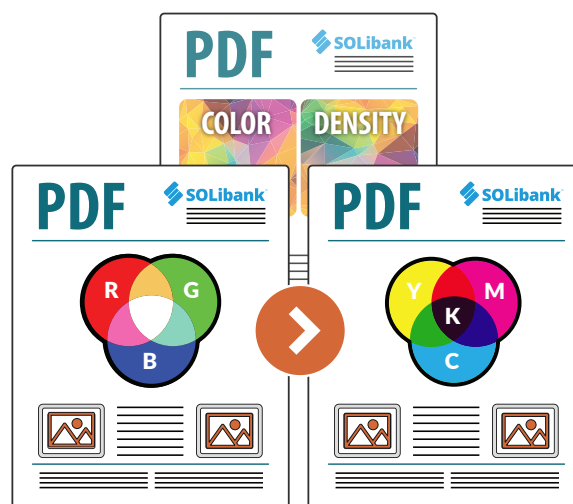
MailGard®



Optimize Color

Color management—like profiles and rendering intent—can be conditionally applied to images, text, graphics, and shading, allowing different rules for various color types in a single pass.

- Automated rules-based dynamic selection of the appropriate color profile and device intent
- Optimize for print & eDelivery
- RGB to CMYK & CMYK to Grayscale
- Convert Rich black to True black for crisper barcodes/images and reduce ink usage
- Adjust color density to save ink/toner and maintain fidelity



Optimize Images

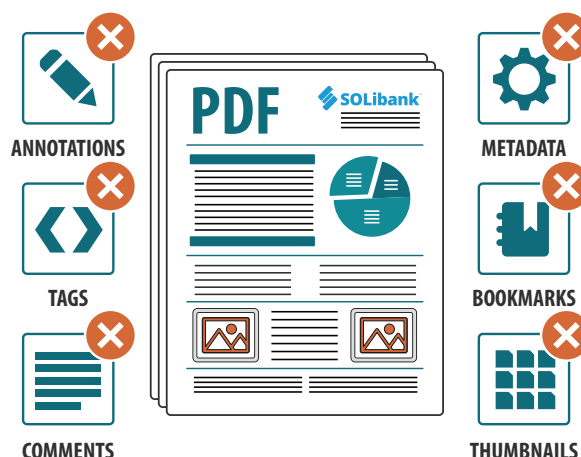
Images contained in the file can be optimized if output resolution exceeds printing or eDelivery needs. Image downsampling reduces file size, standardizes image types, and manages compression and alternate images, simplifying the document.

- Downsample: color, grayscale, monochrome
- Size reduction
- 16-bit to 8-bit
- Discard alternate types
- Specify compression type
- Standardization

Optimize & Remove Objects

ReadyPDF reduces document overhead by removing unnecessary content—like attachments, metadata, off-page elements—and optimizes empty or poorly structured PDF objects.

- Remove user data: annotations, comments, metadata, document tags, bookmarks, forms, and thumbnails
- Remove object data: name and structure trees, JavaScript actions, and attachments
- Remove empty, off-page and hidden objects

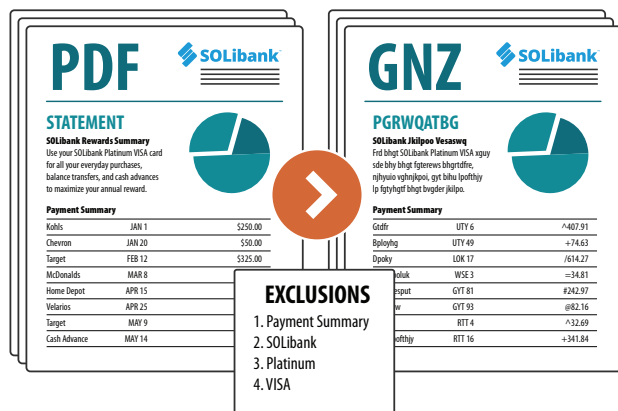
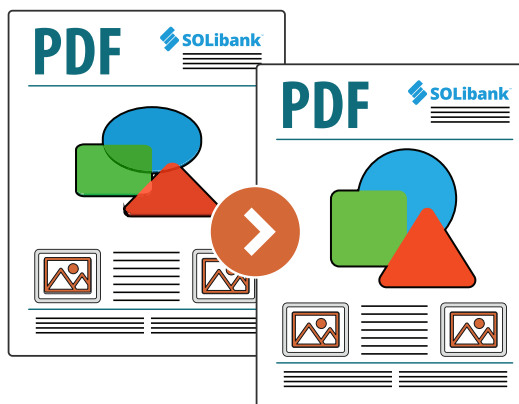




Correct Structural Issues

A PDF may appear fine but still be inefficiently structured for production printing. Using ReadyPDF's features can correct these structural issues, making files better suited for high-volume processing.

- Compress and optimize content streams and data structures
- Flatten transparency layers
- Remove cross-reference tables
- Remove redundant content
- Convert page content to XObjects



Obfuscate Data

Scramble all of the text in PDF files or you can provide a list of exclusions for static content that you don't want changed. The replaced text is replaced with the same type of characters so numbers remain numbers and text stays as text.

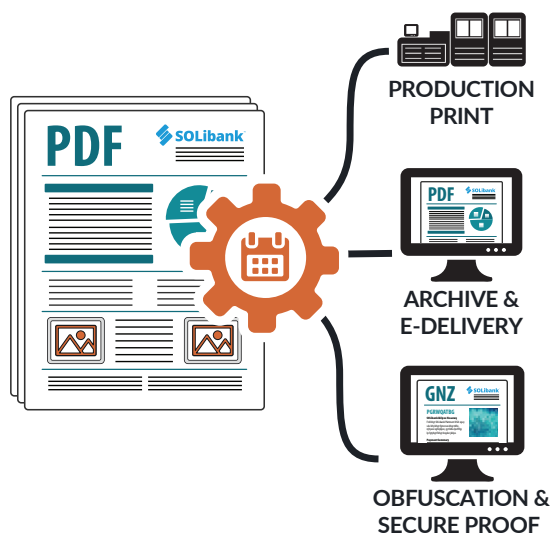
- Use clean data for test runs – no need for costly document destruction
- Jumble live data so it becomes safe to share and non-identifiable
- Receive and send live proof jobs to customers without sensitive data



Automate Tasks

Use ReadyPDF for high-performance processing including scheduling and automating tasks.

- Automatically route PDFs based on features like image and text properties to optimized configuration profiles
- Import ReadyPDF optimization reports into third-party AI tools to generate high-level summaries and customer-facing reports
- Unlike shareware or other solutions, ReadyPDF is intended for mission-critical applications where ease of use and reliability are of utmost importance



ReadyPDF's obfuscation features operate on multiple levels to produce optimized, PII-secure documents. Users control which elements of a PDF are discarded, including attachments, JavaScript actions, hidden content layers, images, and paths, reducing file bloat without affecting the recipient's experience. Numbers and specific words can be excluded or whitelisted, allowing essential elements like page numbers or section headings to remain visible while sensitive information is securely protected.

SOLibank

718 mBiG YhvG
YBG GiuNC:S B 65272
[solibank.solimarsystems.com](#)

A.F.I OJEA DPBR H
666 A BHUNBN N
RB KLNDRFEUP 05418-9140

Transactions since your last statement

REF#	TRANS DATE	DETAILS
2	yXG 72	BDO N DBC YKXWIC0
5	yXG 72	YKXAe SRC- 442 pBCKC WDUuK dX mpCX
4	yXG 72	BhAuDWCNGC - XdXiOu SB
3	yXG 72	WIORpKmXYKpD NGHiGp WsKSa XYIOD
4	yXG 74	YKXAe SRC- 442 pBCKC WDUuK dX mpCX

GOT UGLY PDF?

THEN YOU'RE READY FOR THE SOLIMAR PDF OPTIMIZER!

Call us at +1-619-849-2800 or visit [www.solimarsystems.com](#) and see how easy PDF optimization can be with ReadyPDF®

COMBINES & REUSES RESOURCES

EMBEDS & CONSOLIDATES FONTS

OPTIMIZES COLORS

OPTIMIZES IMAGES

CORRECTS PDF STRUCTURAL ISSUES

PRIE FLIGHT VALIDATION

SOLIBANK

718 mBiG YhvG
YBG GiuNC: S B 65272

NEW BALANCE \$559.89

MINIMUM PAYMENT

Partial Obfuscation

Statement Date cUpJKHJJ 77: 5721
Account # AAAA PAA PAA PAA 722
Page 2 of 5

SOLibank Payback™ VISA
MONTHLY STATEMENT

LnSSaLOB

718 mBiG AhBG
CXO GIpDN:OB 65277
[vetIdCuQ,vXtIwfvvCfaww/XXW](#)

C.LJ OJL RPER H
666LE OMDMBMO
RE KANUDFE.DP 55419,5140

SLeuveYfleBCCluYo vegf tCvfClefowaBI

NyKs	SNKMIT RKSL	RYFKIEK	hwPBMF)=:
2	yBg 72	XDCS NXC YWXWICG	+55:27
5	yBg 72	YWKAe OTY, 424 uXCKY KKpuWhB muYX	_23:12
8	yBg 72	XhApKKYNGY / BdWiOu OB	+735:68
5	yBg 72	WSTUwmCBwpD ConHgP WsKSk XYION	_577:77
4	yBg 78	YWKAe OTY/ 424 uXCKY KKpuWhB muYX	_4:66

FroItLoEal nd iacLUya:::

GOT UGLY PDF?

THEN YOU'RE READY FOR THE SOLIMAR PDF OPTIMIZER!

Call us at +1-619-849-2800 or visit [www.solimarsystems.com](#) and see how easy PDF optimization can be with ReadyPDF®

COMBINES & REUSES RESOURCES

EMBEDS & CONSOLIDATES FONTS

OPTIMIZES COLORS

OPTIMIZES IMAGES

CORRECTS PDF STRUCTURAL ISSUES

PRIE FLIGHT VALIDATION

OPTIMIZATION REPORTING

LnSSaLOB

718 mBiG AhBG
CXO GIpDN-OB 65277

MLMU hr kMaY #579/82

N IRINB W UncWYMF

Full Obfuscation

Klefowaul qefa capikeJJ 77: 5720
hyXeguf \$ APAA APP APP APP 222
UCua 2 nl 5

TPEIdeBOU egdeYO wiKh
mCGWad SY KBWumpOK

it vXg pesa CBG DgaCfiXuVL oyeqfjBy IpIC
XLuegdeYO=L av Cfqr: XCti,
2 677 424 7143 ~ 926 424 2184
KWS YaicrFU 2 677 424 5452

OevWoBf bno bCfo kapfneLG 03: 7832
SeFciG IBIGwG hegwoBf #37/53

SkiJaof Y IdiY EM beJMaof +76:62

WaIvenUEpeteoV hUp 56#21 _44:12
folajayl \$ +5:51
XHsYUdy#FiUnrlly / _44:12
WEJFLHUUU-vLHioLy\$ _664:22

Mom pCiCBXo TM =579/82

OiaLiIf tIMI _77:77:77
XcelItpta vJaLrt 6 775:94

iBloLoCfi ureLWCfleB

hBBGcT lufaLoCfl efoCeC Xr kop 03#32
OHULHnVeofAU 21:77_
WEJFLHUUU 21:77_

OevWoBf NaYfxq %\$\$\$% %\$\$\$% %\$\$\$%
RHLa bHm %\$\$\$% %\$\$\$% %\$\$\$%
BYn kolob Hm %\$\$\$% %\$\$\$% %\$\$\$%
SLUFu/ %\$\$\$% %\$\$\$% %\$\$\$%

mHua FlavHubHShgtUlIg. KPri nKMA SKDR T

Ksa kBRF MBWNYD
ccoo ccc ccc ccc 333

wHPBMFYReKkYq

“ReadyPDF’s obfuscation features are great! We can scramble text so personally identifiable information is completely protected, while still sharing files with prospects and vendors for testing and troubleshooting.”

DES

Washington State
DEPARTMENT OF
ENTERPRISE SERVICES

”

Optimization Reporting

ReadyPDF delivers powerful reporting that turns raw data into actionable insight, generating detailed before-and-after analyses with up to 90 key data points to provide clear visibility into file content, structure, and efficiency gains. These reports support application onboarding by quickly identifying optimal settings for consistent, high-quality processing, and offer precise prepress feedback to improve upstream PDF creation.

ReadyPDF Report		SOLIMAR SYSTEMS		
Filename: SOLibank.pdf Optimized: January 25, 2025, 20:53:19		SPDE Version: 9.3.002876 / Report Version: v14.28 Processing Time: 6.844 seconds		
Image Usage	Color Usage	Font Usage	Discarded Items	Optimization Time
General Information		Input File	Output File	Difference
File Size		503,112,427	75,928,940	-427,183,487 + -85%
Total Pages		3,098	3,098	0
Pages with Transparency		0	0	0
Size of Page Contents		349,789,993	68,518,183	-281,271,810 + -80%
Number of Shadings		105,332	105,332	0
Number of Text Objects		1,190,790	1,190,790	0
Number of Paths		134,763	134,763	0
Fonts		Input File	Output File	Difference
Subsetted Fonts		17,039	17,039	0
Font Programs		17,039	9	-17,030 +
Font Descriptors		17,039	17,039	0
Size of Font Data		134,186,894	47,524	-134,139,370 +
Embedded Fonts		Input File	Output File	Difference
Type 0		0	0	0
Type 1		3,098	0	0
Type 3		0	0	0
TrueType		13,941	0	0
Total		17,039	0	0

PDF Optimization Report Summary: SOLibank Customer Report

Key Optimization Results

These metrics represent the core achievements of the optimization process, highlighting dramatic improvements in file efficiency. The 85% reduction in file size while maintaining all 3,098 pages demonstrates the effectiveness of the optimization strategy.

- File Size: Reduced from 503,112,427 bytes to 75,928,940 bytes (85% reduction)
- Page Content Size: Decreased from 349,789,993 bytes to 68,518,183 bytes (80% reduction)
- Total Pages: 3,098 (unchanged)
- PDF Version: 1.6 (unchanged)

Font Optimization

Font handling proved to be a major source of redundancy while maintaining readability. The optimization process successfully reduced font programs from 17,039 to 9, a significant reduction in file size without compromising functionality.

- Subsetted fonts: 17,039 (unchanged)
- Font programs reduced from 17,039 to 9
- Font data size reduced from 134,186,894 bytes to 47,524 bytes (99.96% reduction)

Font types:

- Type 1 fonts: 3,098
- True Type fonts: 13,941

Conclusion

The optimization process successfully reduced essential content and quality. Significant reduction in file size (85%) and font data size (99.96%). The optimization process maintains all content and quality while significantly reducing file size and improving efficiency.

Client: SOLibank Project: PDF Optimization I Date: Jan 25, 2025

Key Outcomes:

- File size reduced by 85% (from 503MB to 76MB)
- Page content size reduced by 80%
- Font data size reduced by 99.96%

Performance Metrics:

- Total pages: 3,098 (unchanged)
- PDF version: 1.6 (unchanged)
- Optimization time: 6.844 seconds

Notable Achievements:

- Maintained all original content and functionality
- Significant reduction in font programs (17,039 to 9)
- No loss of image quality or color management

Benefits to Client:

- Improved file sharing and storage efficiency
- Faster document loading times
- Reduced bandwidth usage for digital distribution

Next Steps:

- Recommend client feedback on optimized PDF performance
- Explore potential for batch processing of similar documents
- Schedule follow-up to discuss any additional optimization needs

The optimization reports generated by ReadyPDF solution can be easily imported into external AI tools, enabling organizations to automatically transform detailed technical data into high-level summaries and customer-facing reports. By leveraging AI-driven analysis, businesses can quickly highlight key insights such as efficiency gains, file size reductions, and process improvements, making the information simpler to consume, easier to use, and faster to act on.

“For one particular job, we host and archive 100% of the output and print the content on a color roll press. Pre-ReadyPDF, this application would have a 24-hour turnaround. **Using ReadyPDF it takes just 1 hour – the savings are quite incredible!**”

GILMORE
DOCULINK

ReadyPDF & ReadyPDF Prepress Console

ReadyPDF is fully integrated with the Solimar Chemistry™ platform, providing comprehensive automation capabilities and broad compatibility across workflows. It can be deployed as a module within Solimar® Print Director™ Enterprise (SPDE), as a stand-alone server, or accessed through the ReadyPDF Prepress Console thin-client application. The Prepress Console offers an intuitive interface that makes configuring and processing files straightforward and efficient, allowing users to handle ad-hoc files, preview optimized output, and access detailed reports in real time. With support for multiple concurrent users, teams can experiment, troubleshoot, and fine-tune PDFs collaboratively, all without interrupting ongoing production or impacting workflow efficiency.

The screenshot displays the ReadyPDF Prepress Console interface. The main window shows a list of jobs with columns for Job Name, Actions, and Messages. A configuration window is open, showing various optimization modes and settings. A PDF viewer is also open, displaying a statement report from SOLibank.

Jobs List:

Job Name	Actions	Messages
SFN-1012.pdf	[Icons]	Client output created: \\MACHINE\$\Users\soluser\AppData\Local\Temp\ReadyPDF
SFN-2025.pdf	[Icons]	Processing Dispatch Job: SFN-2025.pdf
Accessibility_6_Pages.pdf	[Icons]	PDF saved to: \\MACHINE\$\Users\soluser\Local\Temp\ReadyPDF
October_Cover_Color_47_Pages.pdf	[Icons]	47 impressions created for job "October_Cove_Color_47_Pages"
Fall_Catalog-1458995374.pdf	[Icons]	Client output created: \\MACHINE\$\Users\soluser\Catalog
Annuity-Statements-September.pdf	[Icons]	Client output created: \\MACHINE\$\Users\soluser\Output\Statements
Corpair-Statements-October-2025.pdf	[Icons]	Processing Dispatch Job: \\MACHINE\$\Users\soluser\Corpair
Assurance-Insurance-Reports.pdf	[Icons]	Client output created: \\MACHINE\$\Users\soluser\Assurance
Brokerage-Welcome-Letters.pdf	[Icons]	Client output created: \\MACHINE\$\Users\soluser\Output\Letters

Configuration Window:

Template: Your Description Here

Optimization Modes

- Flexible Configuration: Customize PDF optimization settings
- Consolidate Outline Fonts: Combine subsetted fonts (No other optimizations)
- Embed Outline Fonts With Warning: Embed all outline fonts (Warn on failure)
- Embed Outline Fonts With Abort: Embed all outline fonts (Abort on failure)
- Obfuscate Input: Randomize text to make content unreadable
- Finishing Only: Embed finishing commands (Input file only)
- Preflight: Analyze for production quality and compatibility
- Validation: Check for corrupted or missing content

PDF Viewer:

SFN-1012.02.pdf

1 / 831 | 94% | [Icons]

SOLibank

718 m8iG VhwG
YBG GiUNC: SB 6527z
solibank.solimarsystems.com

A.F. 1 OJEADPBR H
666 A BHNUNB NN
R BKLNDR: UP 05418- 9140

SOLibank Payback VISA
MONTHLY STATEMENT

Statement Date: 01/01/2025
Account #: AAAA PAA PAA 72Z
Page: 2 of 5

If you have any questions regarding this or Payback™ rewards, call:
2 377 442 7585 / 976 442 7584
TTY Service 2 377 442 3812

Payment due date: TadtinQv 03. 7639
Total minimum payment: -35/73
Current minimum payment: +76.61

Previous balance, hlp 56600: -44.12
Interest: +1.55
Payments/credits: -44.12
Purchases/charges: +664.74

New balance = #569.89

Credit limit: 71777.77
Xvelhltis v.anih: \$6,775.94

Interest Information

Annual interest rates as of 10/01/2024

REF#	TRANS DATE	DETAILS	AMOUNT(D)
2	yXG 72	BDOIN DBC YXWVC O	-35.47
5	yXG 72	YXWVC SRC - 442 pBCK CNDuK dX mpCX	-25.54
4	yXG 72	BhAuDMNGC - XdXDu SB	+733.68
3	yXG 72	WDRpkmXYpD MchGp Ye KSaXYWOD	-177.77
4	yXG 74	YXWVC SRC - 442 pBCK CNDuK dX mpCX	+2.66

continued on reverse

ReadyPDF optimization modes & template configuration

Integrated viewer to access settings and job messages, view PDF output and review optimization reports

With reusable templates for prepress tasks—such as preflight checks, image downsampling, font validation, and color adjustments—users can test, adjust, and perfect settings before submitting jobs to SPDE for production. Integrated viewers and reporting tools give instant feedback, streamlining onboarding, optimization, and troubleshooting. The ReadyPDF Prepress Console empowers prepress teams and developers to optimize, test, and manage PDF workflows with ease—delivering faster setup, higher-quality output, and seamless integration with SPDE production systems.

Applications Tested:



Transaction Statements
Mono & Color



Direct Mail (DM)
Letter & Mailer



Book for VITS Books
System Demo



16 Panel
Z-fold



Posters -
Duplex



Postcards -
Duplex

RIP SPEEDS

102% UP TO **↑**
IMPROVEMENT

Reduced the time to the first page sent to the print engine.

FILE SIZES

98% UP TO **↓**
REDUCTION

Optimized network bandwidth with reduction of the original file size.

FONTS

88% UP TO **↓**
REDUCTION

Consolidated, embedded, subsetted and reduced the number of fonts.

COLOR SPACES

20% UP TO **↓**
REDUCTION

Optimized managed, separation, and spot color spaces.

IMAGE DATA

14% UP TO **↓**
REDUCTION

Downsampled images to optimize delivery, archive and storage.



ReadyPDF default configuration produced significant results.



Reduces file sizes to optimize use of the network bandwidth.



Optimizes color spaces for color consistency and faster processing.



Optimizes fonts, graphics, page sizes and orientations, and image resolution.



Reduces ink usage by applying color profiles and conversions.



Deletes unneeded overhead from file transforms and legacy indexing.



Detects and corrects problems before they hit the production floor.



Reduces file sizes to optimize use of file storage and archive cost.



XML-accessible file reports are generated for analysis.

We're Here to Help!



Online demos of our solution suite & capabilities



Free file testing of AFP, IPDS, Metacode, PCL, PDF, PostScript® & VIPP®



On-site assessments & evaluation systems



CHEMISTRY™
POWERED BY SOLIMAR

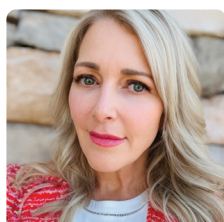
Our modular solutions are off-the-shelf configurable with intuitive user interfaces. Professional services are available, but not required.



SOLIMAR UNIVERSITY™
ONLINE

We empower our global clients and partners with 24/7 on-demand training content. Register today at: suo.solimarsystems.com

Ready to discuss your needs and questions? Let's have a chat!
Ping us at SOLichat@solimarsystems.com



Mary Ann Rowan

Chief Experience Officer (CXO)
mobile: +1.619.920.5854
[linkedin.com/in/maryannrowan](https://www.linkedin.com/in/maryannrowan)
mary.ann.rowan@solimarsystems.com

Hi - I'm Diego,
the Solimar AI Bot!

Ask me anything. I reside on the Solimar website and can answer your questions.



SUN & SEA • 1991
SOLIMAR
SYSTEMS

Solimar Systems, Inc. • tel: +1.619.849.2800 • www.solimarsystems.com

© 2025. Solimar Systems, Inc. All rights reserved. Trademarks are property of their respective owners. REV 0925-v1.1