

Automate, Optimize, and Track Your Document Delivery!



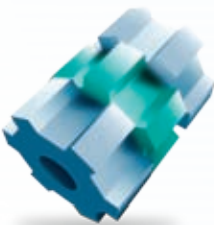
SOLitrack™

SOLitrack is a database-centric job management system that uses a centralized web-based interface to control multiple instances of Print Director™ Enterprise to track and monitor job security, routing and destination device status.



Print Director™ Enterprise

Client-server-based output management solution that provides multi-level security, remote administrator and operator access, e-mail alerts, powerful job routing/tracking capabilities, and industry-leading data stream transforms.



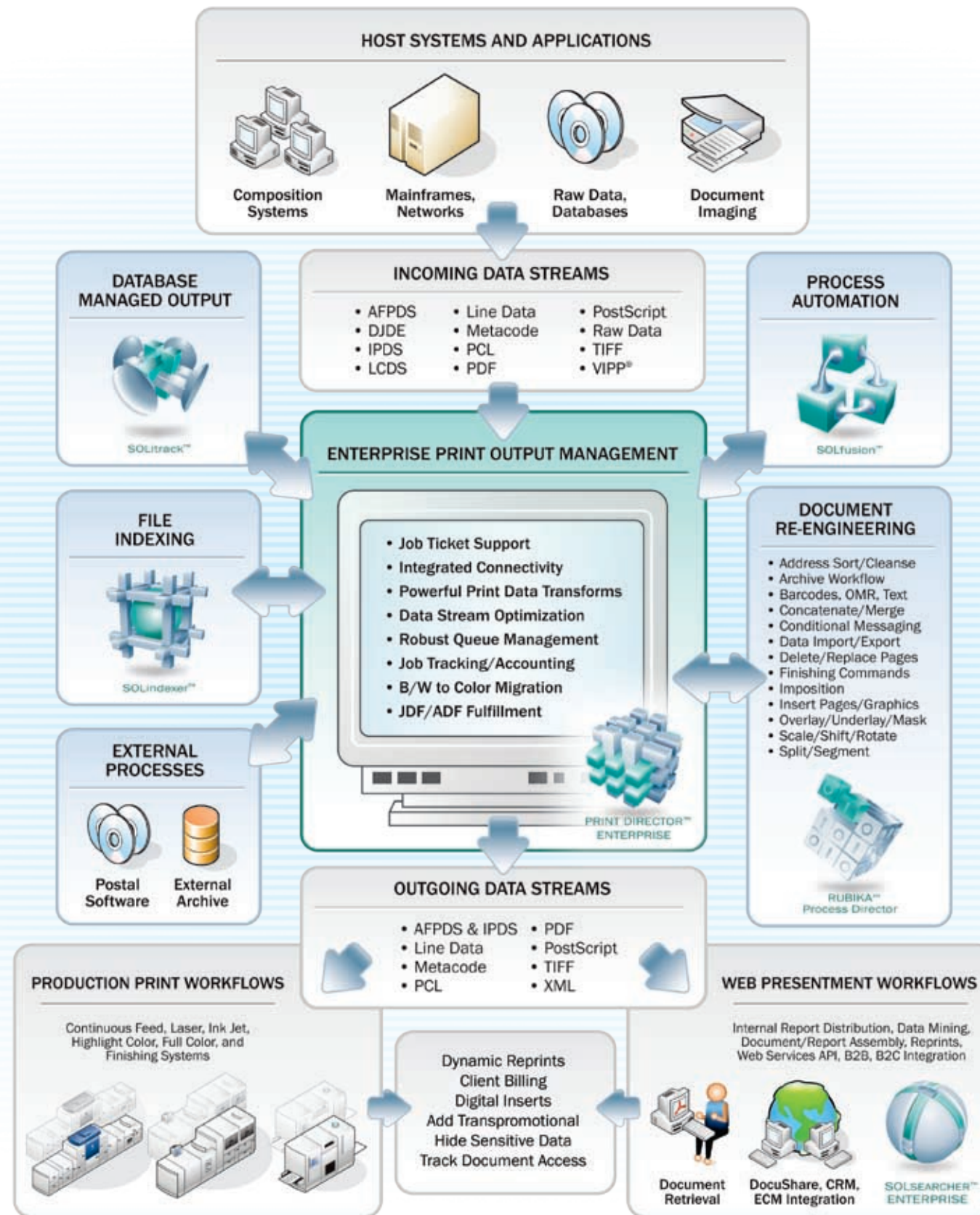
SOLscript™

PostScript preamble that emulates and optimizes Xerox VIPP® software, extending the reach of VIPP applications to virtually any workgroup and production printers, as well as ERM/COLD and archive systems.



iCONVERT™

AFP transform engine that automatically routes mainframe, AS/400, and application reports directly to virtually all desktop and production printers, viewing stations and archive systems.



SOLfusion™

Centralized application that allows you to automate multiple sets of output production tasks to support business-critical processes. SOLfusion supported tasks include external processes, scripts, indexing of PDF documents and execution of Rubika process configurations.



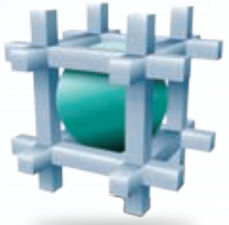
Rubika™

Modular document re-engineering workflow solution that can be configured to automate manual processes, enable postal savings, add value to documents, and modify print data on-the-fly at run time.



SOLindexer™

Suite of powerful PDF indexing tools for Adobe® Acrobat® and Reader® that provides an easy to use method for rapidly locating and capturing relevant information. Works as stand-alone product or in conjunction with Rubika.



SOLsearcher™ Enterprise

Highly scalable and secure electronic document delivery and web presentment solution that enables organizations to effectively index, store, search and retrieve large collections of transactional and scanned documents. Ideal for B2B and B2C environments.

