

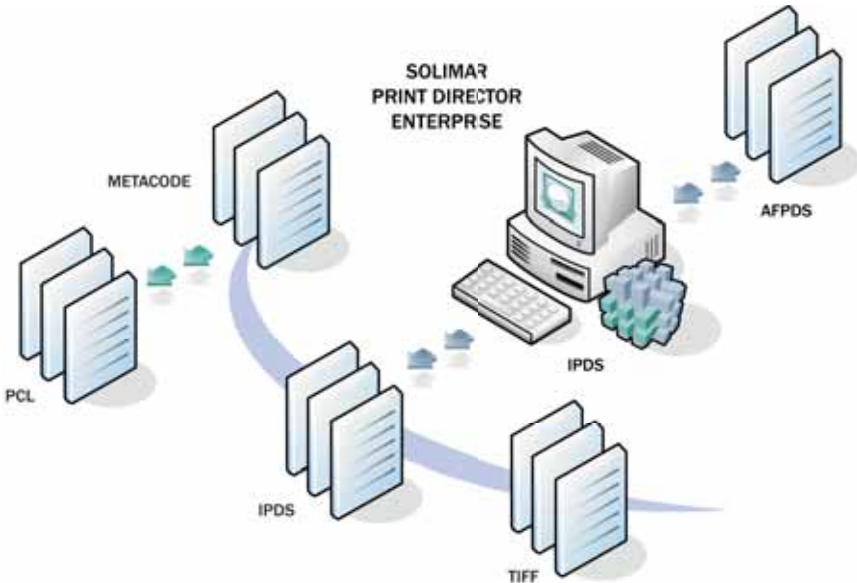
# Solimar® Print Director™ Enterprise (SPDE)



## AFPDS::IPDS Conversion Module

### Overview

The AFPDS::IPDS module converts AFPDS data streams, reaching several thousand pages per minute, from mainframes, AS/400s and network systems to IPDS. This enables AFP print data intended for centralized mainframe printers to be used with a wide variety of production or distributed IPDS printers. This module facilitates increased flexibility in processing and printing data traditionally locked in the mainframe, AS/400, AIX world and vendor-specific AFPDS to IPDS products. The module works with the IPDS Printer Controller to emulate host-based PSF to manage and drive IPDS printers.



### Technical Specifications

The AFPDS::IPDS emulation module accepts AFPDS data, which is a binary stream of variable-length structured fields (records) that define a document and its resources. In IBM documentation, AFPDS data is also commonly referred to as MO:DCA-P (Mixed Object: Document Content Architecture-Presentation) data. The module also supports ACIF data, where the AFPDS document data and all resources are concatenated in one file.

The Line Mode::AFPDS module converts AFP formatted line and mixed mode data into fully composed AFPDS for further processing by the AFPDS modules. The AFPDS::IPDS module supports:

- MO:DCA-P IS/1, BCOCA (1D and 2D), IOCA FS10, GOCA DR/2V0, PTOCA PT1 and PT2 (all orientations and rotations supported)
- IM images, overlays, page segments, presentation spaces (all orientations, rotations, etc.)
- Object positioning, trimming, scaling, etc.
- Copies, duplex, offset stacking (jog), media source
- Converts inline resources and print data dynamically to PostScript resources
- Line mode and mixed mode AFPDS

### Components

- AFPDS::IPDS module
- AFP font collection of expanded core fonts (licensed separately)
- Line Data::AFPDS module



